



naomi j ryan
estate agents



House - End Terrace



Bedrooms: 3



Bathrooms: 2



Receptions: 1



Heating: Gas



Parking: Yes



Garden: Yes



Council Tax Band: D

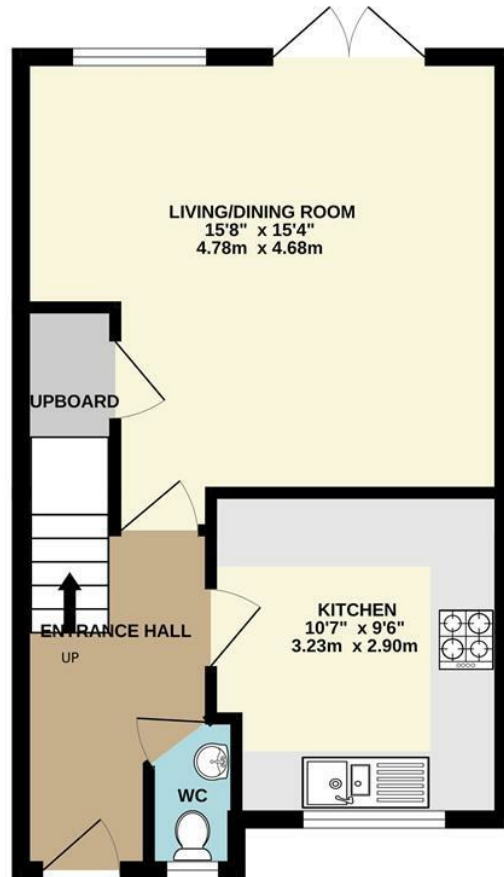
£1,350 Per Month



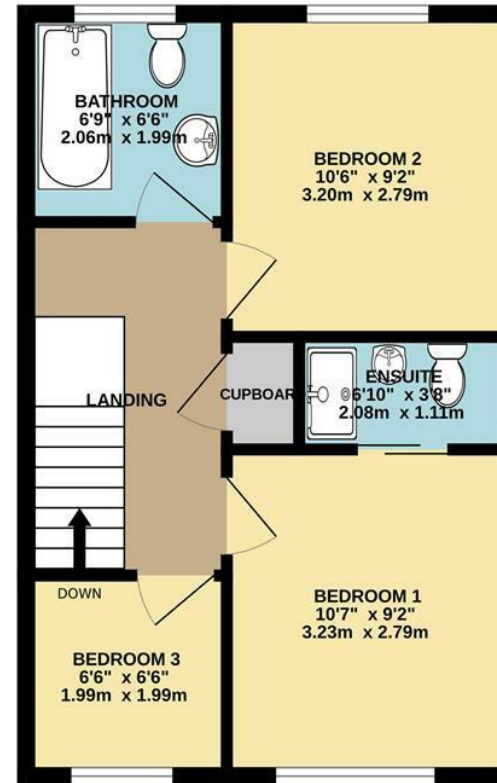
Painters Court,
, Exeter, EX2 8PP

www.naomijryan.co.uk

GROUND FLOOR
400 sq.ft. (37.1 sq.m.) approx.



1ST FLOOR
388 sq.ft. (36.1 sq.m.) approx.



TOTAL FLOOR AREA: 788 sq.ft. (73.2 sq.m.) approx.

Whilst every attempt has been made to ensure the accuracy of the floorplan contained here, measurements of doors, windows, rooms and any other items are approximate and no responsibility is taken for any error, omission or mis-statement. This plan is for illustrative purposes only and should be used as such by any prospective purchaser. The services, systems and appliances shown have not been tested and no guarantee as to their operability or efficiency can be given.
Made with Metropix ©2025

SUMMARY

This delightful three bedroom property is located a short stroll from Exeter's quayside, the property benefits from three bedrooms, 2 doubles and a single (master with ensuite), kitchen with integrated appliances, spacious lounge diner and family bathroom.

The rear garden is laid to lawn with patio, garden shed and gate to the allocated parking space.

The quayside has a variety of cafes, restaurants, shops and scenic river walks and cycle paths. The property is also waking distance to Exeter High Street and Exe Bridges retail park.

EPC Rating C.

Council Tax Band D.

One pet considered with an additional pet rent of £25 per month.

In person viewings only.

Holding Deposit £311.



naomi j ryan
estate agents

